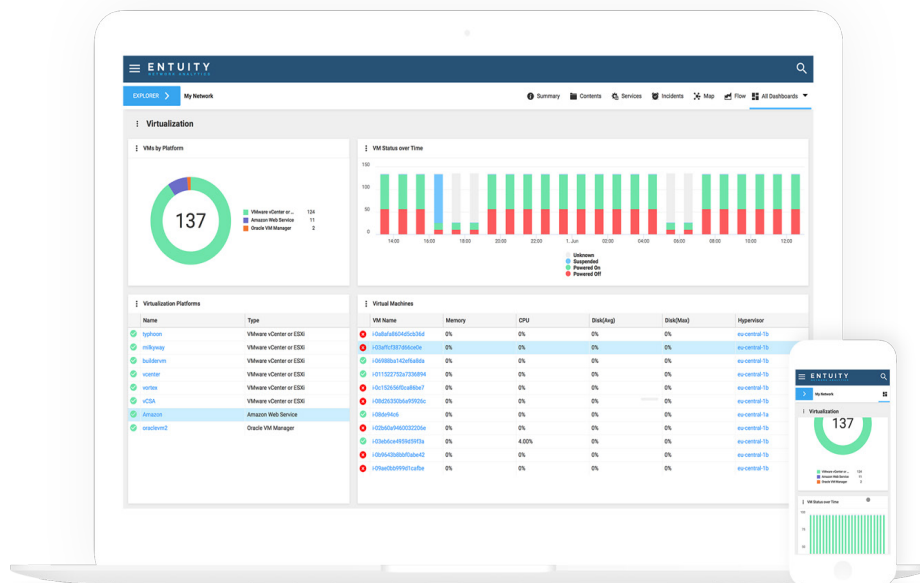


# Entuity Network Analytics

Clarify the Chaos  
Faster Insight. Faster Networking.

## Deliver outstanding end-user experiences

- ✓ Entuity Network Analytics (ENA) simplifies network performance monitoring so you can concentrate on delivering great end-user services.
- ✓ Go from reactive to proactive. Keep your network functioning optimally before problems become issues.
- ✓ Outage costs add up quickly. Put an end to outage mishaps, effectively plan for growth and offer transparency from IT to the rest of the business with Entuity Network Analytics.



**ENA dashboards provide concise, easy to understand customizable data for network management. 100% Mobile Responsiveness--all capabilities from desktop version available via mobile devices. IT teams can manage their network anywhere, anytime.**

## Product Highlights

- ✓ Enterprise scalability. Scales easily, federated architecture for seamless expansion.
- ✓ Supports Multi-tenancy including overlapping IP addresses for management from the same server
- ✓ Provides industry's best custom dashboard builder to reflect how IT organizations manage their networks
- ✓ Always-on business services require always-connected management. 100% mobile enabled for management from laptops, smartphones, tablets
- ✓ Integrates with 3rd party vendors --BMC, Dell, ServiceNow, Oracle, HP, IBM

## Network Analytics for today's digital ecosystem

Entuity Network Analytics is a powerful, yet easy-to-use enterprise network analytics solution designed for organizations to maximize network performance and service availability.

Rapidly changing heterogenous networks require faster insight and faster networking. Entuity Network Analytics:

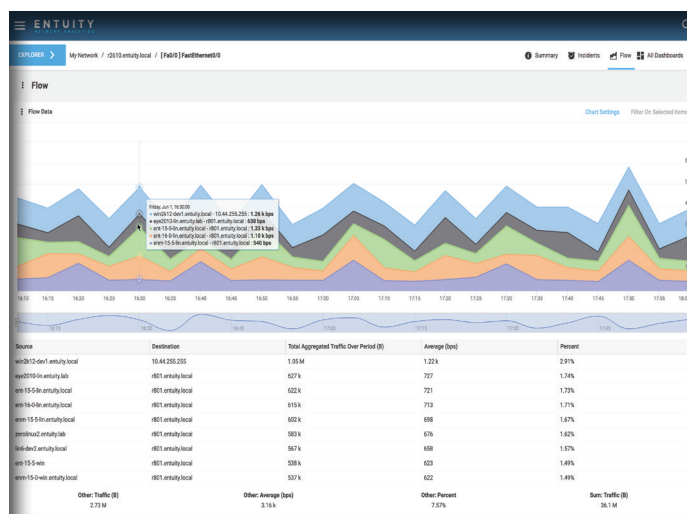
- reduces alert noise so you can focus on what is important to you
- fixes issues quickly and gets to the root cause using real-time analytics
- allows for proactive management with predictive trends
- supports a multi-cloud strategy.

ENA is easy to install, customize, operate and maintain, and lowers total cost of ownership to a fraction of other products.

Entuity Network Analytics includes everything you need to manage your digital environment including:

- ✔ Auto Discovery and Inventory
- ✔ SurePath Application Path Monitoring
- ✔ Live Topology
- ✔ Events Management
- ✔ Root Cause Analysis
- ✔ Configuration Management & Monitoring
- ✔ Multi-cloud support--AWS, Azure
- ✔ Seamless and Infinite Scalability
- ✔ Elemental Performance
- ✔ Integrated Application Flow, NBAR
- ✔ Customizable Reporting/Dynamic Dashboards
- ✔ Integrated Virtual/Physical Management
- ✔ 100% Mobile Responsive
- ✔ 3rd Party Vendor Integrations available

**This ENA NetFlow Dashboard provides at a glance details for ease of monitoring.**



## Uncommon Versatility -- Integration with Industry Leaders Adds More Value

ENA can easily be integrated with industry leaders such as BMC Software, VMware, Dell, ServiceNow, Oracle, IBM, and HP delivering a uniform way to share network infrastructure data with application monitoring for a far-reaching management platform.

## ENA Built-In Modules Supply Specialized Functionality

Entuity Network Analytics contains modules for specific management capabilities: SurePath Application Path Management, IBM BladeCenters, QoS, MPLS, Firewalls, Cisco Unified Communications Manager, Cisco IPSLA, Wireless, Cisco ACI, High Availability, Routing Protocols, and VPN Gateways.

# Network Management for Today and Tomorrow

Representing a solid alternative to multiple disparate network tools and expensive platform solutions, Entuity Network Analytics is known for its short training time, and ease of management and administration. It adapts to how you wish to manage your environment and is up and running within hours.

For more information visit: [entuity.com](http://entuity.com).

**Entuity Authorised Partner:**

Grant Systems Ltd.  
72 Hammersmith Road  
Hammersmith  
London W14 8TH, UK  
T: +44 (0) 207 559 9778

[www.grantsys.co.uk](http://www.grantsys.co.uk)